

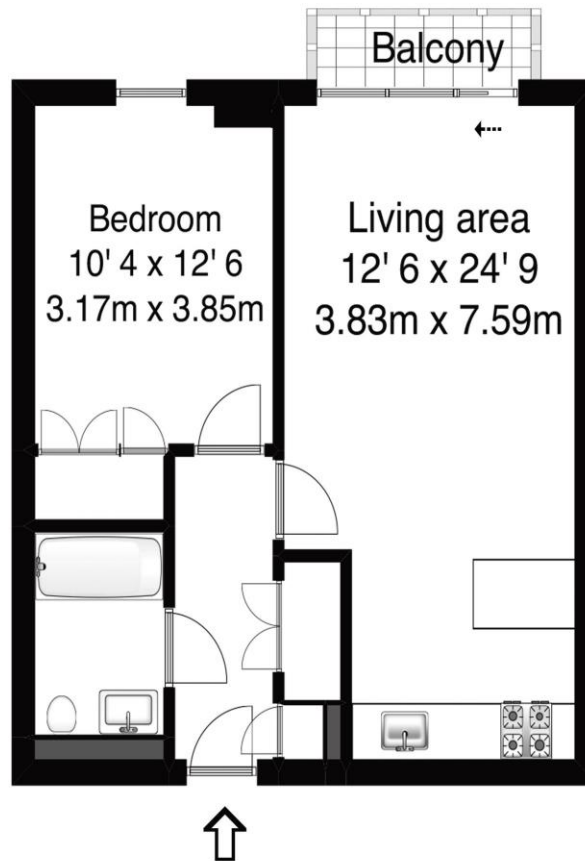


244 The Heart Walton-On-Thames Surrey KT12 1GB

£1,400 pcm + Initial deposit



Approximate gross internal floor area 538 Sq Ft 50 Sq M



Whilst every attempt has been made to ensure the accuracy of the floor plan contained here, measurements are approximate and no responsibility is taken for any error, omission, or mis-statement. The plan is for illustrative purposes only and should be used as such by any prospective purchaser.

Offered to let this second floor, one bedroom apartment with southerly views over the main gardens. The accommodation also includes a fitted kitchen with dishwasher, lounge with a balcony, bedroom with built in wardrobes, bathroom, oak flooring to most rooms, underground parking, concierge service and 24 hour security. This property is ideally placed for easy access to town centre shops and restaurants, and walking distance to Walton mainline railway station. The property is unfurnished. EPC Rating C.

Available NOW!



AGENTS NOTES: These details do not constitute any part of an offer or contract. In issuing them we do not have any authority to give any warranty or representation whatsoever in respect of this property. These details are provided without any responsibility on our part or the part of the vendors. No statements in these details are to be relied upon as representations of fact and purchasers should satisfy themselves by inspection or otherwise as to the accuracy of the statements contained therein.

Equipment: We have not tested the equipment or central heating system mentioned in these particulars and purchasers are advised to satisfy themselves as to their working order and condition.

Measurements: Great care is taken when measuring but measurements should not be relied upon for ordering carpets, equipment, etc.